

For outdoor applications **seawater resistant**



info and installation video: [www.perfix.nl/installation](http://www.perfix.nl/installation)

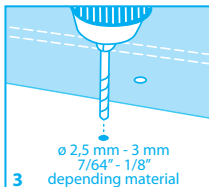
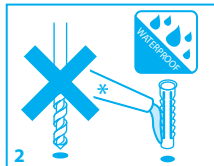
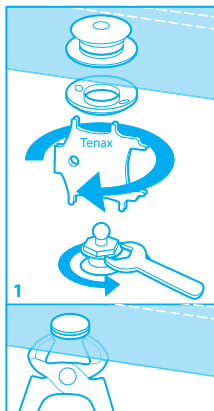
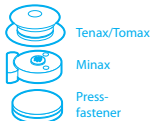
## INSTALLATION INSTRUCTION

Code: 9100-5

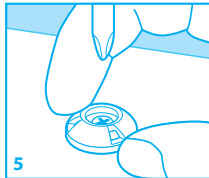


8

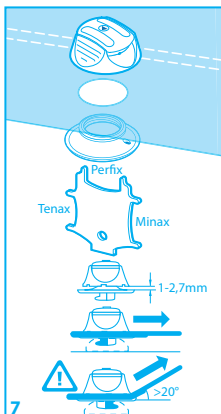
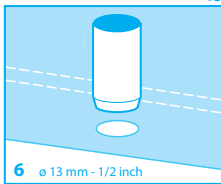
switch over: 1,2,4,5,7 installation: 3,4,5,6,7



\* PU-sealant or equivalent recommended (preferably no silicon)  
PU-scellant ou équivalent recommandé (de préférence pas de silicon)  
PU-Dichtungsmittel oder gleichwertig empfohlen (vorzugsweise nicht Silikone)  
PU-Sigillante o equivalente consigliato (preferibilmente senza silicona)  
PU-Sellador o equivalente recomendado (preferiblemente no de silicona)  
PU-afdichtingskit of gelijkwaardig (bij voorkeur geen silicone)



**Flat surface only**  
Seulement surface plane  
Nur ebene Fläche nur  
Superficie plana solo  
Superficie plana sólo  
Alleen op vlakke ondergrond



**Reinforcement recommended for thin fabric**  
Reinforcement recommandé pour les tissu minces  
Verstärkung empfohlen für dünne Stoff  
Rinforzo consigliato per panno sottili  
Refuerzo recomendado para paño fino  
Versteviging aanbevolen voor dun doek

**PERFIX®**  
safe and secure

PERFIX® is patented and a registered trademark

[WWW.PERFIX.NL](http://WWW.PERFIX.NL)